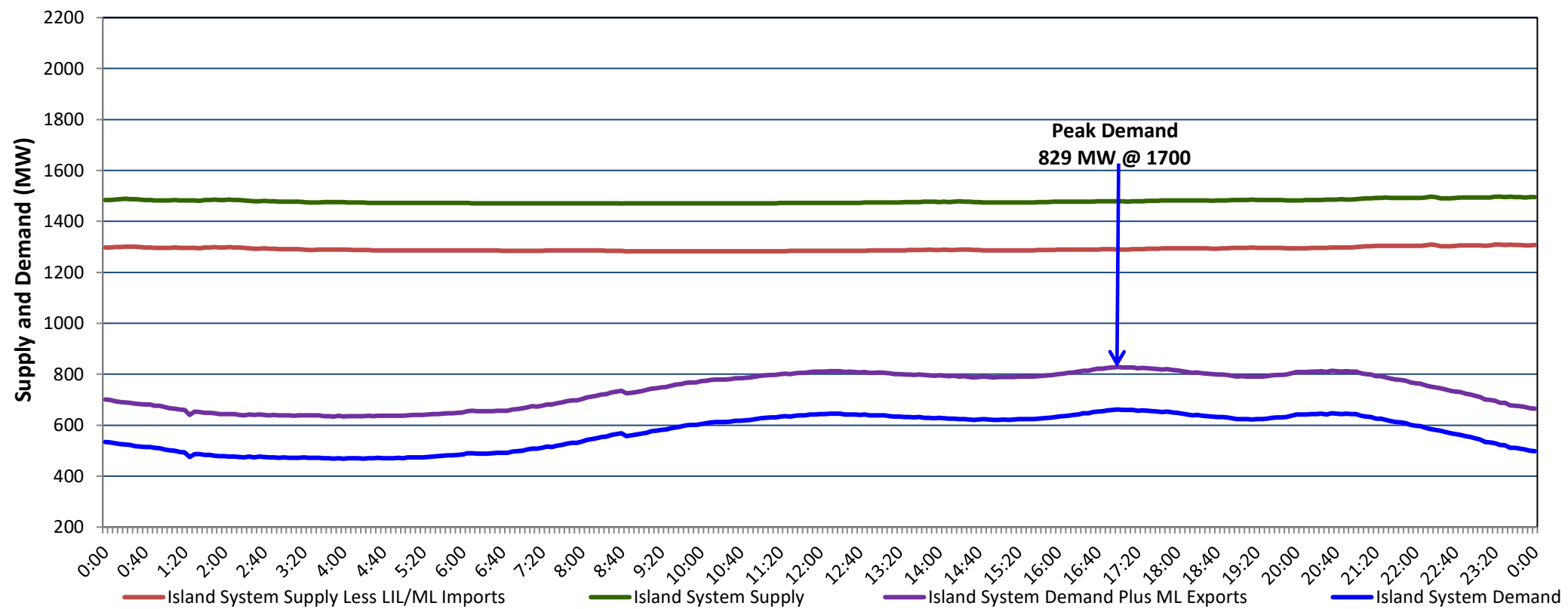


Newfoundland Labrador Hydro (NLH) Supply and Demand Status Report Filed Tuesday, September 05, 2023

Section 1 Island Interconnected System Supply, Demand & Exports Actual 24 Hour System Performance For Monday, September 04, 2023



Supply Notes For September 04, 2023

- 1,2
- A As of 0701 hours, March 06, 2023, Upper Salmon Unit unavailable (84 MW).
 - B As of 0800 hours, May 21, 2023, Holyrood Unit 2 unavailable due to planned outage (170 MW).
 - C As of 0903 hours, June 29, 2023, St. Anthony Diesel Plant available at 8.85 MW (9.7 MW).
 - D As of 0800 hours, July 09, 2023, Holyrood Unit 1 unavailable due to planned outage (170 MW).
 - E As of 2059 hours, July 13, 2023, Stephenville Gas Turbine unavailable (50 MW).
 - F As of 2238 hours, July 25, 2023, Bay d'Espoir Unit 6 unavailable (76.5 MW).
 - G As of 0933 hours, August 15, 2023, Holyrood Unit 3 unavailable due to planned outage (150 MW).

Section 2 Island Interconnected Supply and Demand

Tue, Sep 05, 2023	Island System Outlook ³	Seven-Day Forecast	Temperature (°C)		Island System Daily Peak Demand (MW)	
			Morning	Evening	Forecast	Adjusted ⁷
Available Island System Supply: ⁵	1,398 MW	Tuesday, September 5, 2023	15	15	890	890
NLH Island Generation: ^{4,8}	915 MW	Wednesday, September 6, 2023	17	20	685	685
NLH Island Power Purchases: ⁶	105 MW	Thursday, September 7, 2023	20	19	735	735
Other Island Generation:	190 MW	Friday, September 8, 2023	17	12	730	730
ML/LIL Imports:	188 MW	Saturday, September 9, 2023	11	11	735	735
Current St. John's Temperature & Windchill:	14 °C	Sunday, September 10, 2023	12	18	750	750
7-Day Island Peak Demand Forecast:	890 MW	Monday, September 11, 2023	13	14	765	765

Supply Notes For September 05, 2023

- 3
- H At 0745 hours, September 05, 2023, Bay d'Espoir Unit 5 unavailable due to planned outage (76.5 MW).

- Notes:
1. Generation outages for running and corrective maintenance are included. These are not unusual for power system operations. They generally do not impact customer supply. The power system operators schedule outages to system equipment whenever possible to coincide with periods when customer demands are low and sufficient supply reserves are available. However, from time to time equipment outages are necessary and reserves may be impacted.
 2. Due to the Island system having no synchronous connections to the larger North American grid, when there is a sudden loss of large generating units there may be a requirement for some customer's load to be interrupted for short periods to bring generation output equal to customer demand. This automatic action of power system protection, referred to as under frequency load shedding (UFLS), is necessary to ensure the integrity and reliability of system equipment. Under frequency events have typically occurred 5 to 8 times per year on the Island Interconnected System and the resultant customer load interruptions are generally less than 30 minutes. With the activation of the Maritime Link frequency controller during the winter of 2018, UFLS events have occurred less frequently.
 3. As of 0800 Hours.
 4. Gross output including station service at Holyrood (24.5 MW) and improved NLH hydraulic output due to water levels (35 MW).
 5. Gross output from all Island sources (including Note 4).
 6. NLH Island Power Purchases include: CBPP Co-Gen, Nalcor Exploits, Rattle Brook, Star Lake, Wind Generation and capacity assistance (when applicable).
 7. Adjusted for curtailable load, market activities and the impact of voltage reduction when applicable.
 8. Due to limitations inherent in the design of combustion turbines, the output of combustion turbines may be reduced in the event that ambient temperatures exceed the threshold

Section 3 Island Peak Demand Information Previous Day Actual Peak and Current Day Forecast Peak

Mon, Sep 04, 2023	Actual Island Peak Demand ⁹	17:00	829 MW
Tue, Sep 05, 2023	Forecast Island Peak Demand		890 MW

- Notes: 9. Island Demand / LIL / ML Exports (where applicable) is supplied by NLH generation and purchases, plus generation owned and operated by Newfoundland Power and Corner Brook Pulp & Paper (Deer Lake Power, DLP).